

KENWOOD

KDC-3051R
KDC-3051G
KDC-3051RY
KDC-3051GY
KDC-315A
KDC-315R
KDC-3251RY

CD-RECEIVER

INSTRUCTION MANUAL

AMPLI-TUNER LECTEUR DE CD

MODE D'EMPLOI

РАДИОПРИЕМНИК С КОМПАКТ-ДИСКАМИ

ІНСТРУКЦІЯ ПО ЕКСПЛУАТАЦІИ

АВТОМАГНІТОЛА

ІНСТРУКЦІЯ З ЕКСПЛУАТАЦІЇ

Kenwood Corporation



This symbol mark indicates that Kenwood manufactured this product so as to decrease harmful influence on the environment.



Изделие изготовлено в Малайзии

© 2010 Kenwood Corporation All Rights Reserved.



GET0671-001A (EW/E2W)

CONTENTS

Safety	2
Preparation	4
How to attach/detach the faceplate	
How to reset your unit	
Initial settings before operations	
Basic operations	5
Getting started	6
Canceling the display demonstration	
Setting the demonstration mode	
Adjusting the clock	
Listening to the radio	6
Adjust [SETTINGS] mode settings	
Listening to a disc	8
Selecting Repeat Play	
Selecting Random Play	
Selecting Scan Play	
Selecting a folder/track/file	
Listening to the other external components	9
Function settings	10
Troubleshooting	11
Installation/connection	12
Basic procedure	
Warning	
Caution	
Wiring connection	
Installing the unit	
Specifications	15

Safety

WARNING

Stop the car before operating the unit.

Important to know...

- To prevent a short circuit, never put or leave any metallic objects (such as coins or metal tools) inside the unit.

- **Caution:** Adjust the volume so that you can hear sounds outside the car. Driving with the volume too high may cause an accident.

- **Condensation:** When the car is air-conditioned, moisture may collect on the laser lens. This may cause disc read errors. In this case, remove the disc and wait for the moisture to evaporate.

- This unit can only play the CDs with:



- The illustrations in this manual are examples used to explain more clearly how the controls are used. Therefore, what appears on the illustrations may differ from what appears on the actual equipment.

- If you experience problems during installation, consult your Kenwood dealer.

- When you purchase external components, check with your Kenwood dealer to make sure that they work with your model and in your area.

- Detailed information and notes about the playable audio files are stated in an online manual on the following site:
www.kenwood.com/cs/ce/audiofile/



Declaration of Conformity with regard to the EMC Directive 2004/108/EC

Manufacturer:

Kenwood Corporation
2967-3 Ishikawa-machi, Hachioji-shi, Tokyo,
192-8525 Japan

EU Representative's:

Kenwood Electronics Europe BV
Amsterdamseweg 37, 1422 AC UITHOORN,
The Netherlands

This Product is not installed by the manufacturer of a vehicle on the production line, nor by the professional importer of a vehicle into an EU Member State.

Information on Disposal of Old Electrical and Electronic Equipment and Batteries (applicable for EU countries that have adopted separate waste collection systems)



Products and batteries with the symbol (crossed-out wheeled bin) cannot be disposed as household waste.



Old electrical and electronic equipment and batteries should be recycled at a facility capable of handling these items and their waste byproducts.

Pb

Contact your local authority for details in locating a recycle facility nearest to you. Proper recycling and waste disposal will help conserve resources whilst preventing detrimental effects on our health and the environment. Notice: The sign "Pb" below the symbol for batteries indicates that this battery contains lead.

The marking of products using lasers



The label is attached to the chassis/case and says that the component uses laser beams that have been classified as Class 1. It means that the unit is utilizing laser beams that are of a weaker class. There is no danger of hazardous radiation outside the unit.

For Turkey

Bu ürün 26891 sayılı Resmi Gazete'de yayımlanan Elektrikli ve Elektronik Eşyalarda Bazı Zararlı Maddelerin Kullanımının Sınırlandırılmasına Dair Yönetmeliğe uygun olarak üretilmiştir.

This product complies with Directive, Number 26891 regarding "REGULATION ON THE RESTRICTION OF THE USE OF CERTAIN HAZARDOUS SUBSTANCES IN ELECTRICAL AND ELECTRONIC EQUIPMENT".

Muting upon the reception of a phone call

To use this feature, connect the MUTE lead to your telephone using a commercial telephone accessory. (page 13, 14)

When a call comes in, "CALL" appears.

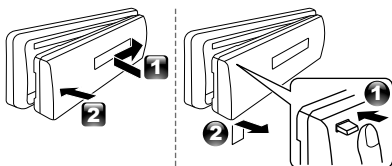
- The audio system pauses.
- To continue listen to the audio system during a call, press **⏮ SRC**. "CALL" disappear and the audio system resumes.

When a call ends, "CALL" disappear.

- The audio system resumes.

Preparation

How to attach/detach the faceplate

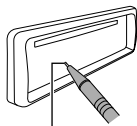


- Do not expose the faceplate to direct sunlight, excessive heat, or humidity. Also avoid places with too much dust or the possibility of water splashing.
- Keep the faceplate in its casing while detached.

- The faceplate is a precision piece of equipment and can be damaged by shocks or jolts.
- To prevent deterioration, do not touch the terminals of the unit and faceplate with your fingers.

How to reset your unit

If this unit fails to operate properly, press the reset button.



Reset button

The unit returns to factory settings when the reset button is pressed.

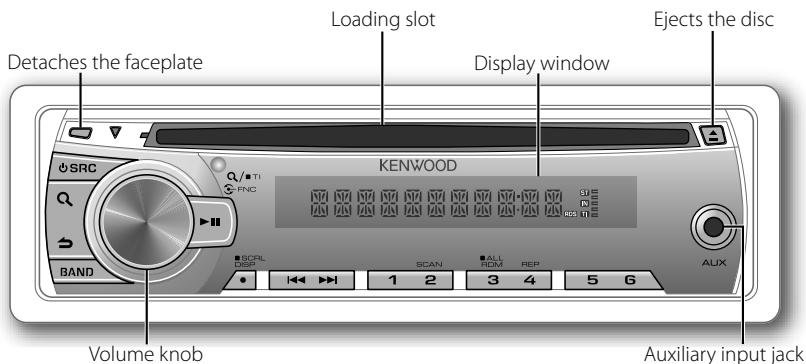
Initial settings before operations

- 1 Press **SRC** to enter [STANDBY] mode.
- 2 Press the volume knob to enter [FUNCTION] mode.
- 3 Turn the volume knob to select [INITIAL SET], then press to enter.
- 4 Turn the volume knob to make a selection, then press to confirm.
See table below for selection.
- 5 Hold **↶** to finish the procedure.

Item	Selectable setting (Preset: *)
PRESET TYPE	NORM* : Memorizes one station for each preset button in each band (FM1/ FM2/ FM3/ MW/ LW). ; MIX : Memorizes one station for each preset button regardless of the selected band (FM1/ FM2/ FM3/ MW/ LW).
KEY BEEP	ON*/ OFF : Activates/deactivates the keypress tone.
RUSSIAN SET	ON : Folder name, file name, song title, artist name, album name are displayed in Russian (if applicable). ; OFF* : Cancels.
P-OFF WAIT	Sets the duration when the unit will automatically turns off (while in standby mode) to save the battery. -----: Cancels; 20M* : 20 minutes ; 40M : 40 minutes ; 60M : 60 minutes
BUILTIN AUX	ON1* : Outputs sound of the connected external component when "AUX" is selected as the source. ; ON2 : Outputs sound from the connected external component when "AUX" is selected as the source. When you turn on the power, the sound attenuates (to prevent noise when no external component is connected). Turn the volume knob clockwise to return to the previous volume level. ; OFF : Disables "AUX" in source selection.
CD READ	1* : Automatically distinguishes between audio file disc and music CD. ; 2 : Forces to play as a music CD.
SWITCH PRE	REAR*/ SUB-W : Selects whether rear speakers or a subwoofer are connected to the line out terminals on the rear of the unit (through an external amplifier).
SP SELECT	OFF*/ 5/4/ 6 × 9/6/ OEM : Selects the speaker size for optimum performance.

[SWITCH PRE] is selectable only with KDC-3051R/ KDC-3051G/ KDC-315A/ KDC-315R/ KDC-3251RY.

Basic operations



The following indicator lights up when...

ST: A stereo broadcast is received (FM).

IN: A disc is in the unit.

TI: Traffic Information function is turned on.

RDS: RDS service is available.

When you press or hold the following button(s)...

Button	General operation
SRC	<ul style="list-style-type: none"> ■ Turns on. ■ Turns off if pressed and held. ■ Selects the available sources (TUNER, CD, AUX, STANDBY), if the power is turned on. • <i>If the source is ready, playback also starts. "CD" is selectable only when a disc is loaded.</i>
Volume knob (turn)	<ul style="list-style-type: none"> ■ Adjusts the volume level. ■ Selects items.
Volume knob (press)	<ul style="list-style-type: none"> ■ Confirms selection. ■ Enters [FUNCTION] settings.
BAND	<ul style="list-style-type: none"> ■ Selects the FM bands (FM1/ FM2/ FM3) or MW/ LW. ■ Selects the next folder.
▶ II	<ul style="list-style-type: none"> ■ Pauses/resumes playback of a disc. ■ Mutes the sound while listening to a radio or an external component connected to the auxiliary input jack.
◀▶	<ul style="list-style-type: none"> ■ Searches for a radio station. ■ Selects track/file. ■ Fast-forwards/reverses tracks if pressed and held.
SCRL DISP	<ul style="list-style-type: none"> ■ Changes the display information. ■ Scrolls the display information if pressed and held. ■ Enters clock adjustment mode directly (page 6) if pressed and held while in clock display screen.
↶	<ul style="list-style-type: none"> ■ Returns to the previous item. ■ Exit from setting mode if pressed and held.

Getting started

Canceling the display demonstration

The display demonstration is always turned on unless you cancel it.

When you turn on the power (or after you reset the unit), the display shows:

[CANCEL DEMO] → [PRESS] → [VOLUME KNOB]

- 1 Press the volume knob.
[YES] is selected as the initial setup.
 - 2 Press the volume knob again to confirm.
[DEMO OFF] appears.
- If no operation is done for about 15 seconds or if you turn the volume knob to select [NO] in step 2, [DEMO MODE] appears and the display demonstration starts.

Setting the demonstration mode

- 1 Press the volume knob to enter [FUNCTION].
- 2 Turn the volume knob to select [DEMO MODE], then press to enter.

- 3 Turn the volume knob to select [ON] or [OFF].

If [ON] is selected, display demonstration starts if no operation is done for about 20 seconds.

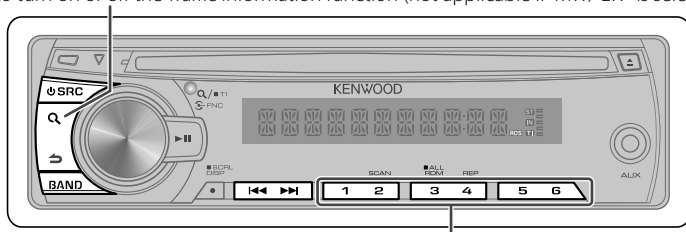
- 4 Hold ↶ to finish the procedure.

Adjusting the clock

- 1 Press the volume knob to enter [FUNCTION] mode.
- 2 Turn the volume knob to select [SETTINGS], then press to enter.
- 3 Turn the volume knob to select [CLOCK], then press to enter.
- 4 Turn the volume knob to select [CLOCK ADJ], then press to enter.
Clock hour flashes on the display.
- 5 Turn the volume knob to adjust the hour, then press to enter minute adjustment.
Clock minutes flashes on the display.
- 6 Turn the volume knob to adjust the minute, then press to confirm.
Press ◀▶ to move between the hour and minute adjustment.
- 7 Hold ↶ to finish the procedure.

Listening to the radio

Hold to turn on or off the Traffic Information function (not applicable if "MW/ LW" is selected).



Hold for about 2 seconds to memorize the current station or the selected Program Type. (Refer to [PTY SEARCH] on page 7 to select the Program Type.)

- Press briefly to recall memorized station (or Program Type after entering the PTY search mode).

- 1 Press **SRC** to select "TUNER."
- 2 Press **BAND** repeatedly to select a band (FM1/ FM2/ FM3/ MW/ LW).
- 3 Press **◀◀ / ▶▶** to search for a station.

Adjust [SETTINGS] mode settings

While listening to the radio...

- 1 Press the volume knob to enter [FUNCTION] mode.
- 2 Turn the volume knob to select [SETTINGS], then press to enter.
- 3 Turn the volume knob to make a selection, then press to confirm.
See table below for selection.
- 4 Hold **↵** to finish the procedure.

Item	Selectable setting (Preset: *)
LOCAL SEEK	ON: Searches only FM stations with good reception. ; OFF*: Cancels.
SEEK MODE	Selects the tuning mode for ◀◀ / ▶▶ buttons. AUTO1*: Automatically search for a station. ; AUTO2: Search in the order of the stations in the preset memory. ; MANUAL: Manually search for a station.
AUTO MEMORY	YES: Automatically starts memorizing 6 stations with good reception. ; NO*: Cancels (automatic memorizing is not activated). (Selectable only if [NORM] is selected for [PRESET TYPE].) (page 4)
MONO SET	ON: Improves the FM reception (but the stereo effect may be lost). ; OFF*: Cancels (stereo effect resumes).
PTY SEARCH	Selects the available Program Type (see table below). Then, press ◀◀ / ▶▶ to start searching. Press the volume knob to enter PTY language selection. Turn the volume knob to select the PTY language (ENGLISH*/ FRENCH/ GERMAN), then press to confirm.
NEWS SET	0M – 90M: Sets the time for receiving the next news bulletin. ; OFF*: Cancels.
AF SET	ON*: Automatically searches for another station broadcasting the same program in the same RDS network with better reception when the current reception is poor. ; OFF: Cancels.
RDS REG	ON*: Switches to another station only in the specific region using the "AF" control. ; OFF: Cancels.
ATP SEEK	ON*: Automatically searches for a station with better reception when the traffic information's reception is poor. ; OFF: Cancels.

- [PTY SEARCH] is selectable only when the source is "FM."
- [NEWS SET/ AF SET/ RDS REG/ ATP SEEK] is selectable only when the source is "FM." If other playback source is selected, these settings are selectable under [RDS SET] item. (page 11)

■ Available Program Type:

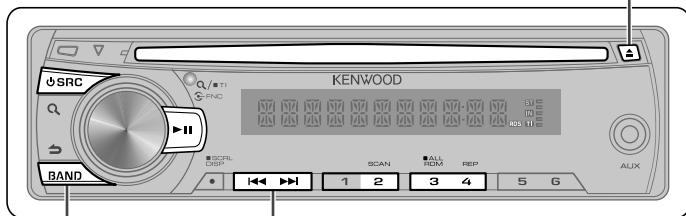
SPEECH	MUSIC	NEWS	AFFAIRS	INFO	SPORT	EDUCATE
DRAMA	CULTURE	SCIENCE	VARIED	POP M (music)	ROCK M (music)	EASY M (music)
LIGHT M (music)	CLASSICS	OTHER M (music)	WEATHER	FINANCE	CHILDREN	SOCIAL
RELIGION	PHONE IN	TRAVEL	LEISURE	JAZZ	COUNTRY	NATION M (music)
OLDIES	FOLK M (music)	DOCUMENT				

The unit will search for the Program type categorized under [SPEECH] or [MUSIC] if selected.
[SPEECH] : White character item. ; [MUSIC] : Black character item.

- The RDS feature won't work where the service is not supported by any broadcasting station.
- If the volume is adjusted during reception of traffic information, the adjusted volume is memorized automatically. It will be applied the next time Traffic Information function is turned on.

Listening to a disc

Ejects the disc. ("NO DISC" appears and "IN" indicator goes off.)



Press to select folder.

- Press to select track/file.
- Hold to fast-forwards/reverses.

- 1 Press **SRC** to turn on the power.
- 2 Insert a disc into the loading slot.
Playback starts automatically.
- 3 Press **▶||** to resume/pause playback (if necessary).

Selecting Repeat Play

Press number button **4 (REP)** repeatedly to make a selection.

Audio CD : TRAC (track) REPEAT,
REPEAT OFF
MP3/WMA : FILE REPEAT, FOLD (folder)
REPEAT, REPEAT OFF

Selecting Random Play

Press number button **3 (ALL RDM)** repeatedly to make a selection.

Audio CD : DISC RANDOM, RANDOM OFF
MP3/WMA : FOLD (folder) RANDOM,
ALL RANDOM, RANDOM OFF

- Press and hold number button **3 (ALL RDM)** to select "ALL RANDOM" only if "RANDOM OFF" is selected initially.

Selecting Scan Play

Press number button **2 (SCAN)** repeatedly to make a selection.

Audio CD : TRAC (track) SCAN, SCAN OFF
MP3/WMA : FILE SCAN, SCAN OFF

- If scan play is selected, the unit starts playing the first 10-second intro of the music in the disc or the current folder. If "SCAN OFF" is selected, the unit resumes normal play of the current song.

Selecting a folder/track/file

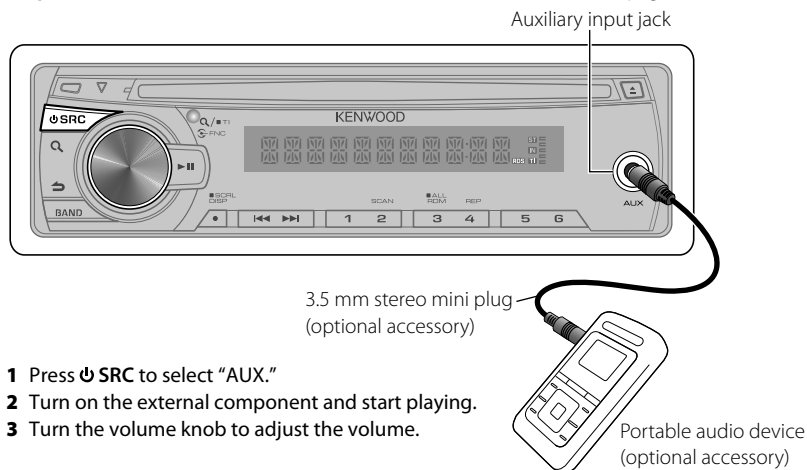
- 1 Press **Q** to enter Music Search mode. "SEARCH" appears, then the current file name appears on the display.
- 2 Turn the volume knob to select a folder/track/file, then press to confirm.
 - To return to the root folder (or first track for audio CD), press **BAND**.
 - To return to the previous folder, press **←**.
 - To cancel the Music Search mode, press and hold **←**.
 - < or > on the display indicates that preceded/next folder is available.

Discs that cannot be used

- Discs that are not round.
- Discs with coloring on the recording surface or discs that are dirty.
- You cannot play a Recordable/ReWritable disc that has not been finalized. (For the finalization process refer to your disc writing software, and your disc recorder instruction manual.)
- 3-inch CD cannot be used. Attempt to insert using an adapter can cause malfunction.

Listening to the other external components

Preparation : Make sure [ON1] or [ON2] is selected for [BUILTIN AUX]. (page 4)



- 1 Press **SRC** to select "AUX."
- 2 Turn on the external component and start playing.
- 3 Turn the volume knob to adjust the volume.

Maintenance

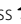

Cleaning the unit: Wipe off the dirt on the panel with a dry silicon or soft cloth. Failure to observe this precaution may result in damage to the monitor or unit.

Cleaning the connector: Wipe off dirt on the connector of the unit and faceplate. Use a cotton swab or cloth.

Handling discs

- Do not touch the recording surface of the disc.
- Do not stick tape etc. on the disc, or use a disc with tape stuck on it.
- Do not use any accessories for the disc.
- Clean from the center of the disc and move outward.
- Clean the disc with a dry silicon or soft cloth. Do not use any solvents.
- When removing discs from this unit, pull them out horizontally.
- Remove the rims from the center hole and disc edge before inserting a disc.

Function settings

- 1 Press the volume knob to enter [FUNCTION] mode.
- 2 Turn the volume knob to select [AUDIO CTRL] or [SETTINGS], then press to enter.
- 3 Turn the volume knob to make a selection, then press to confirm.
 - See table below for selection.
 - Repeat step 3 until the desired item is selected/activated.
 - Press  to return to the previous item.
- 4 Hold  to finish the procedure.

[AUDIO CTRL]: While listening to any source except in STANDBY state...

Item	Selectable setting (Preset: *)
SUB-W LEVEL	-15 — +15 (Preset: 0): Adjusts the subwoofer output level.
BASS BOOST	B.BOOST LV1* / B.BOOST LV2: Selects your preferred bass boost level. ; OFF: Cancels.
SYSTEM Q	NATURAL* / USER/ ROCK/ POPS/ EASY/ TOP40/ JAZZ/ GAME: Selects a preset sound mode suitable to the music genre. (Selects [USER] to use the customized bass, middle, and treble settings.)
BASS ADJUST	BASS C FRQ: 60/ 80/ 100* / 200: Selects the center frequency.
	BASS LEVEL: -8 — +8 (Preset: 0): Adjusts the level.
	BASS Q FCTR: 1.00* / 1.25/ 1.50/ 2.00: Adjusts the Q factor.
	BASS EXTEND: ON: Turns on the extended bass. ; OFF*: Cancels.
MID ADJUST	MID C FRQ: 0.5K/ 1.0K* / 1.5K/ 2.5K: Selects the center frequency.
	MID LEVEL: -8 — +8 (Preset: 0): Adjusts the level.
	MID Q FCTR: 0.75/ 1.00* / 1.25: Adjusts the Q factor.
TRE ADJUST	TRE C FRQ: 10.0K/ 12.5K* / 15.0K/ 17.5K: Selects the center frequency.
	TRE LEVEL: -8 — +8 (Preset: 0): Adjusts the level.
BALANCE	L15 — R15 (Preset: 0): Adjusts the left and right speaker output balance.
FADER	R15 — F15 (Preset: 0): Adjusts the rear and front speaker output balance.
SUB-W SET	ON*: Turns on the subwoofer output. ; OFF: Cancels.
DETAIL SET	LPF SUB-W: THROUGH*: All signals are sent to the subwoofer. ; 85HZ/ 120HZ/ 160HZ: Frequencies higher than 85 Hz/ 120 Hz/ 160 Hz are cut off.
	SUB-W PHASE: REV (180°) / NORM (0°)*: Selects the phase angle of the subwoofer output to be in line with the speaker output for optimum performance. (Selectable only if a setting other than [THROUGH] is selected for [LPF SUB-W].)
	SUPREME SET: ON*: Creates realistic sound by interpolating the high-frequency components that are lost in MP3/WMA audio compression. ; OFF: Cancels. (Selectable only when playback an MP3/ WMA disc.)
	VOL OFFSET: -8 — +8 (for AUX) ; -8 — 0 (for other sources): Presets the volume adjustment level of each source. The volume level will automatically increase or decrease when you change the source. (Before making an adjustment, select the source you want to adjust.)

- KDC-3051R/ KDC-3051G/ KDC-315A/ KDC-315R/ KDC-3251RY only:
 [SUB-W LEVEL/ SUB-W SET/ LPF SUB-W/ SUB-W PHASE] is selectable only if [SWITCH PRE] is set to [SUB-W]. (page 4)
 [SUB-W LEVEL/ LPF SUB-W/ SUB-W PHASE] is selectable only if [SUB-W SET] is set to [ON].
- Select a source before making a source tone memory adjustment, [BASS ADJUST/ MID ADJUST/ TRE ADJUST].

[SETTINGS]

Item	Selectable setting (Preset: *)
AUX NAME	AUX* / DVD / PORTABLE / GAME / VIDEO / TV: Selects the desired name for the connected component. (Selectable only if "AUX" is selected as the source.)
CLOCK	CLOCK ADJ: (For details, see page 6.)
	TIME SYNC: ON*: Synchronizes the RDS station time data and the unit's clock. ; OFF*: Cancels.
DISPLAY	DIMMER SET: ON: Dims the display illumination. ; OFF*: Cancels.
	TEXT SCROLL: AUTO / ONCE: Selects to scroll the display information automatically, or scroll only once. ; OFF*: Cancels.
RDS SET	NEWS SET / AF SET / RDS REG / ATP SEEK: Selectable only if any source other than tuner source is selected. (For details, refer page 7.)

Troubleshooting

Symptom	Remedy/Cause
Sound cannot be heard.	Adjust the volume to the optimum level. / Check the cords and connections.
"PROTECT" appears and no operations can be done.	Check to be sure the terminals of the speaker leads are covered with insulating tape properly, then reset the unit. If "PROTECT" does not disappear, consult your nearest service center.
The unit does not work at all.	Reset the unit.
[P-OFF WAIT] does not work.	Turn off the demonstration mode. (page 6)
Radio reception is poor. / Static noise while listening to the radio.	Connect the antenna firmly. / Pull the antenna out all the way.
"IN" flashes.	The CD player is not operating properly. Reinsert the disc properly. If the condition did not improve, turn off the unit and consult your nearest service center.
CD-R/CD-RW cannot be played back and tracks cannot be skipped.	Insert a finalized CD-R/CD-RW (finalize with the component which you used for recording).
Disc sound is sometimes interrupted.	Stop playback while driving on rough roads. / Change the disc. / Check the cords and connections.
"NA FILE" appears.	The unit is playing an unsupported audio file.
"NO DISC" appears.	Insert a playable disc into the loading slot.
"TOC ERROR" appears.	The CD is quite dirty. / The CD is upside-down. / The CD is scratched a lot. Try another disc instead.
"ERROR 99" appears.	The unit is malfunctioning for some reason. Press the reset button on the unit. If the "ERROR 99" code does not disappear, consult your nearest service center.
"COPY PRO" appears.	A copy-protected file is played.
Noise is generated.	Skip to another track or change the disc.
Tracks cannot play back as you have intended them to play.	Playback order is determined when files are recorded.
"READING" keeps flashing.	Longer readout time is required. Do not use too many hierarchies and folders.
Elapsed playing time is not correct.	This is caused by how the tracks are recorded.
Correct characters are not displayed (e.g. album name).	This unit can only display letters (upper case), numbers, and a limited number of symbols. Cyrillic alphabets (upper case) can also be displayed if [RUSSIAN SET] is set to [ON]. (page 4)

Installation/connection

Part list:

- Ⓐ Faceplate..... (x1)
- Ⓑ Escutcheon..... (x1)
- Ⓒ Mounting sleeve..... (x1)
- Ⓓ Casing for faceplate (x1)
- Ⓔ Wiring harness..... (x1)
- Ⓕ Removal tool (x2)

Basic procedure

- 1 Remove the key from the ignition switch, then disconnect the ⊖ terminal of the car battery.
- 2 Make proper input and output wire connections.
→ "Wiring connection" (page 13, 14)
- 3 Install the unit to your car.
→ "Installing the unit" (page 14)
- 4 Reconnect the ⊖ terminal of the car battery.
- 5 Reset the unit. (page 4)

Warning

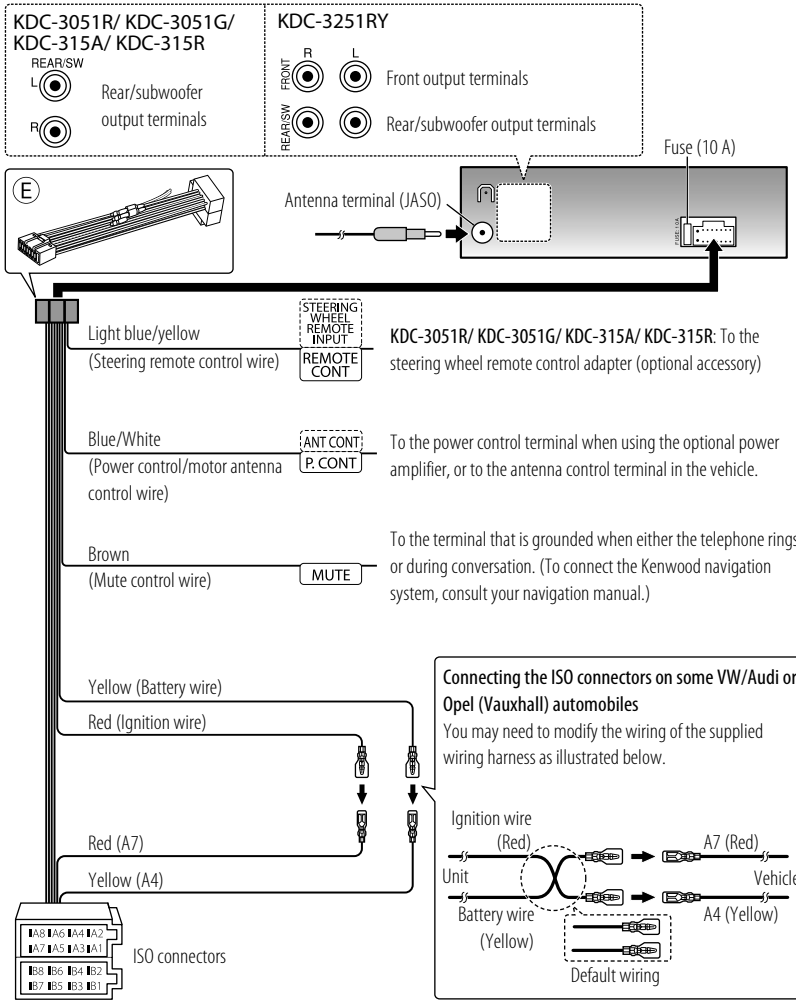
- The unit can only be installed in a car with a 12 V DC power supply, negative ground.
- If you connect the ignition wire (red) and the battery wire (yellow) to the car chassis (ground), you may cause a short circuit, that in turn may start a fire. Always connect those wires to the power source running through the fuse box.
- Disconnect the battery's negative terminal and make all electrical connections before installing the unit.
- Insulate unconnected wires with vinyl tape or other similar material. To prevent a short circuit, do not remove the caps on the ends of the unconnected wires or the terminals.
- Be sure to ground this unit to the car's chassis again after installation.

Caution

- If your car's ignition does not have an ACC position, connect the ignition wires to a power source that can be turned on and off with the ignition key. If you connect the ignition wire to a power source with a constant voltage supply, as with battery wires, the battery may die.
- Do not use your own screws. Use only the screws provided.
- Install this unit in the console of your vehicle. Make sure the faceplate will not hit the lid of the console (if any) when closing and opening.
- After the unit is installed, check whether the brake lamps, blinkers, wipers, etc. on the car are working properly.
- Mount the unit so that the mounting angle is 30° or less.
- If the fuse blows, first make sure the wires aren't touching to cause a short circuit, then replace the old fuse with one with the same rating.
- Connect the speaker wires correctly to the terminals to which they correspond. The unit may be damaged or fail to work if you share the ⊖ wires or ground them to any metal part in the car.
- When only two speakers are being connected to the system, connect the connectors either to both the front output terminals or to both the rear output terminals (do not mix front and rear).
- Do not touch the metal part of this unit during and shortly after the use of the unit. Metal part such as the heat sink and enclosure become hot.
- Mounting and wiring this product requires skills and experience. For safety's sake, leave this work to professionals. If you experience problems during installation, consult your Kenwood dealer.

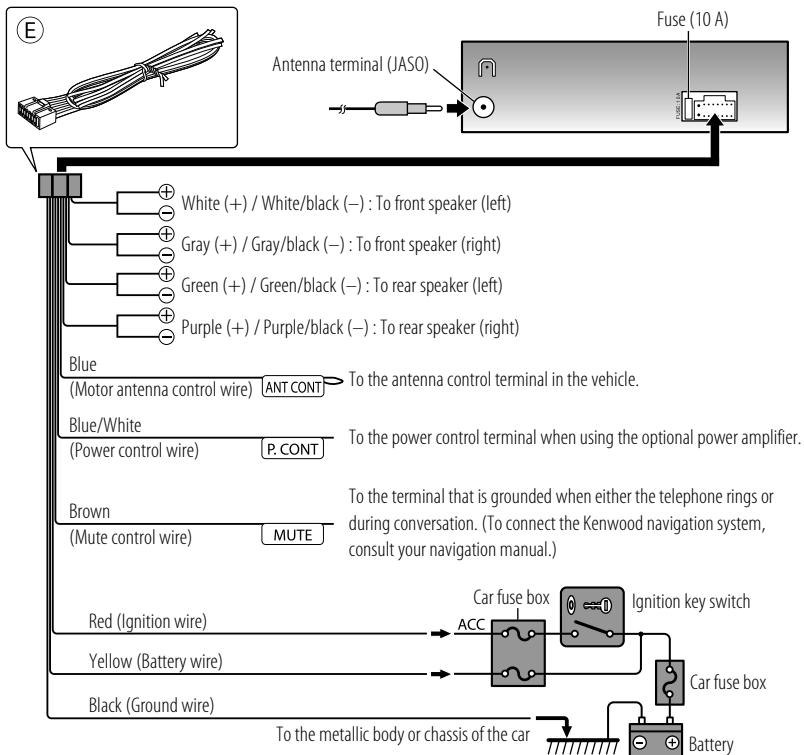
Wiring connection

For KDC-3051R/ KDC-3051G/ KDC-315A/ KDC-315R/ KDC-3251RY

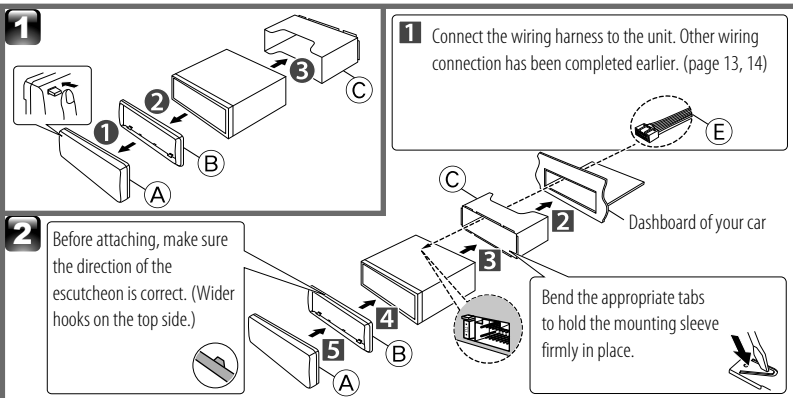


Pin	Color and function		Pin	Color and function	
A4	Yellow	Battery	B1 / B2	Purple ⊕ / Purple/black ⊖	Rear speaker (right)
A5	Blue/White	Power control	B3 / B4	Gray ⊕ / Gray/black ⊖	Front speaker (right)
A7	Red	Ignition (ACC)	B5 / B6	White ⊕ / White/black ⊖	Front speaker (left)
A8	Black	Earth (ground) connection	B7 / B8	Green ⊕ / Green/black ⊖	Rear speaker (left)

For KDC-3051RY/ KDC-3051GY

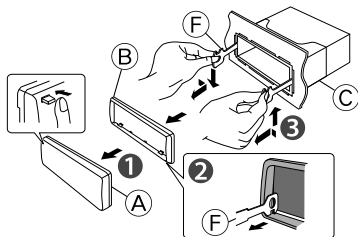


Installing the unit



Removing the unit

- 1 Detach the faceplate.
- 2 Engage the catch pin on the removal tools into the holes on both sides of the escutcheon, then pull it out.
- 3 Insert the removal tools deeply into the slots on each side, then follow the arrows instructions as shown on the right.



Specifications

Subject to change without notice.

FM tuner section

Frequency range (50 kHz space):
87.5 MHz — 108.0 MHz
Usable sensitivity (S/N = 26 dB): 1.0 μ V/75 Ω
Quieting sensitivity (DIN S/N = 46 dB): 2.5 μ V/75 Ω
Frequency response (± 3 dB): 30 Hz — 15 kHz
Signal-to-Noise ratio (MONO): 63 dB
Stereo separation (1 kHz): 40 dB

MW tuner section

Frequency range (9 kHz space):
531 kHz — 1 611 kHz
Usable sensitivity (S/N = 20 dB): 36 μ V

LW tuner section

Frequency range: 153 kHz — 279 kHz
Usable sensitivity (S/N = 20 dB): 57 μ V

CD player section

Laser diode: GaAlAs
Digital filter (D/A): 8 Times Over Sampling
D/A converter: 24 Bit
Spindle speed: 500 rpm — 200 rpm (CLV)
Wow & Flutter: Below Measurable Limit
Frequency response (± 1 dB): 20 Hz — 20 kHz
Total harmonic distortion (1 kHz): 0.01 %
Signal-to-Noise ratio (1 kHz): 105 dB
Dynamic range: 90 dB
MP3 decode: Compliant with MPEG-1/2 Audio Layer-3
WMA decode: Compliant with Windows Media Audio

Audio section

Maximum output power: 50 W \times 4
Output power (DIN 45324, +B = 14.4 V): 30 W \times 4
Speaker impedance: 4 Ω — 8 Ω
Tone action: Bass: 100 Hz \pm 8 dB
Middle: 1 kHz \pm 8 dB
Treble: 10 kHz \pm 8 dB
For KDC-3051R/ KDC-3051G/ KDC-315A/ KDC-315R/ KDC-3251RY:
Preout level / load (CD): 2 000 mV/10 k Ω
Preout impedance: \leq 600 Ω

Auxiliary input section

Frequency response (± 3 dB): 20 Hz — 20 kHz
Input maximum voltage: 1 200 mV
Input impedance: 10 k Ω

General

Operating voltage (11 V — 16 V allowable): 14.4 V
Maximum current consumption: 10 A
Installation size (W \times H \times D):
182 mm \times 53 mm \times 158 mm
Weight: 1.3 kg

About Audio file

- Playable Audio file: MP3 (.mp3), WMA (.wma)
- Playable disc media: CD-R/RW/ROM
- Playable disc file format: ISO 9660 Level 1/2, Joliet, Romeo, Long file name.

Although the audio files are complied with the standards listed above, the play maybe impossible depending on the types or conditions of media or device.