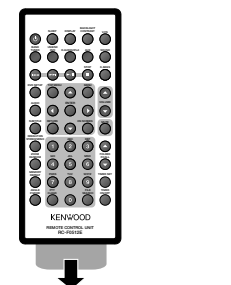
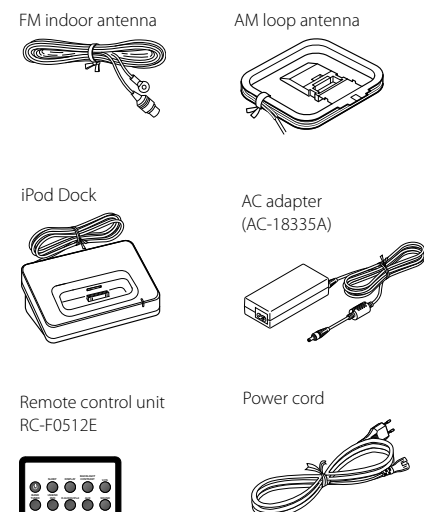


Quick Start Guide

Compact Hi-Fi Component System
C-616DV

What's in the Box?

You should find these accessories upon opening the box.



Pull out the plastic protective sheet before use.

Follow the steps below to use your Compact Hi-Fi Component System

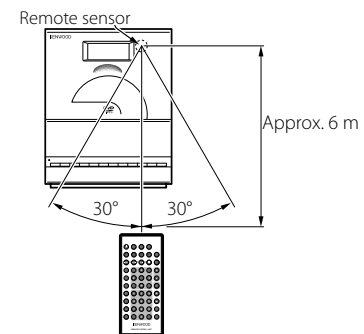
Connections

Setup

Operation

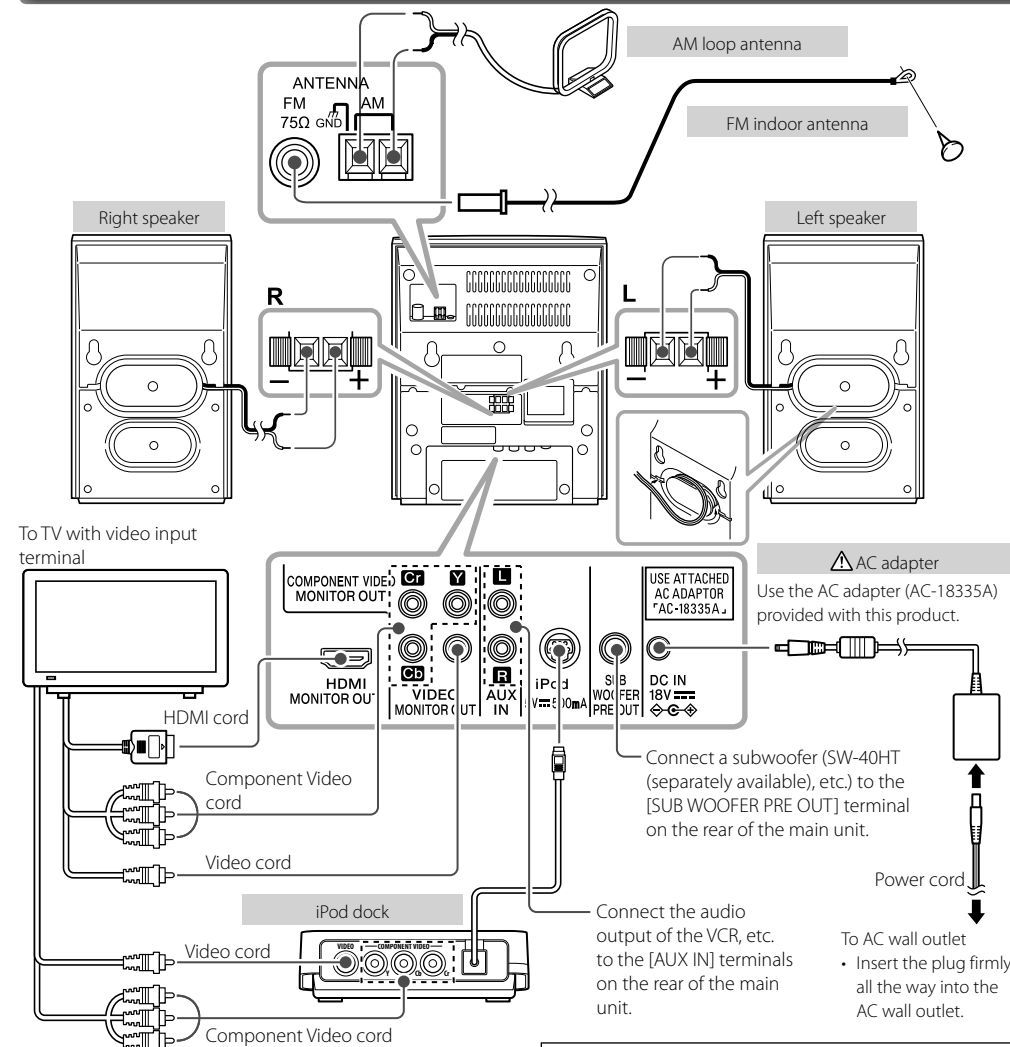
Remote control unit operation

Plug the power cord of the system to a power outlet and press on the remote control unit to turn the system ON. After the system is switched ON, press the desired operation button. Use the remote control unit by pointing it to the remote sensor on the main unit.



© B60-5822-08/00 (E)

Connections



CAUTION
The power in this equipment will not be completely cut off from the wall outlet when the standby switch is turned off.
Install the equipment so that the wall outlet is easily accessible and, in case of emergency, immediately unplug the power plug from the wall outlet. Mains plug is used as the disconnect device. It shall remain readily operable and should not be obstructed during intended use.

CAUTION
Be sure to adhere to the following, or proper ventilation will be blocked causing damage or fire hazard (Main unit and AC adapter).
• Do not place a cloth on the system or place it on a carpet or cushion.
• Do not use the system in a poorly ventilated place.
• Do not place any objects impairing heat radiation onto the top of the unit.
• Leave some space around the unit (from the largest outside dimension including projection) equal to or greater than, shown below.
Top panel: 50 cm

Connecting the FM antenna

- 1 Connect the lead to the [FM 75Ω] terminal.
- 2 Find the location that gives the best reception.
- 3 Secure the antenna as high up as possible.

• The antenna supplied with the system is a basic antenna for indoor use. For stable signal reception, the use of an outdoor antenna (commercially available) is recommended. Disconnect the indoor antenna first before connecting an outdoor antenna.

CAUTION on installing an outdoor antenna

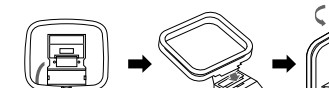
Since antenna installation necessitates skill and experience, always consult your dealer before installation. The antenna should be placed at a distance from the power distribution wires. Otherwise, an electric shock accident may occur if the antenna falls down.

Connecting the AM antenna

- 1 Connect the AM antenna cord to the [AM] and [GND] terminals.



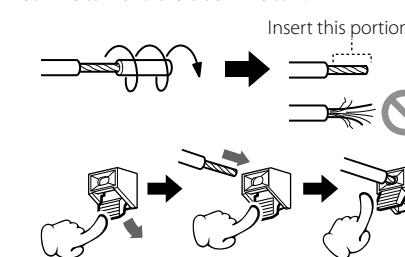
- 2 Setup the antenna in the position and the direction to be able to receive AM broadcast.



• The antenna supplied with the system is for indoor use. Place it as far away as possible from the system, your TV set, the speaker cords, AC adapter and the power cord, and point it in the direction that provides the best reception.

Connecting the speakers

- 1 Connect the right speaker to terminal marked "R", with the red wire to + and the black wire to -.
- 2 Connect the left speaker to terminal marked "L", with the red wire to + and the black wire to -.



- For optimal sound performance, it is recommended to use the supplied speakers.
- Do not connect more than one speaker to any one pair of +/- speaker terminals.

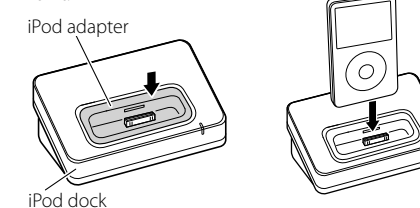
CAUTION for connection

- Do not plug the power cord into the power outlet until all other connections are completed. Before unplugging a connected cord or cable, be sure to switch the system OFF and unplug the power cord from the power outlet in advance.

Connecting the iPod adapter

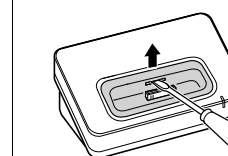
- Connect an iPod adapter, which is provided with your iPod or commercially available in iPod dealers, to the iPod dock of this unit. Note that the iPod adapter is not provided with this unit.

- 1 Insert the iPod adapter into the unit.
- 2 Connect your iPod.



To remove the iPod adapter

- Insert a thin object such as the tip of a flat-blade screwdriver into the slit on the dock adapter and lift it to remove.



Connecting the HDMI terminal

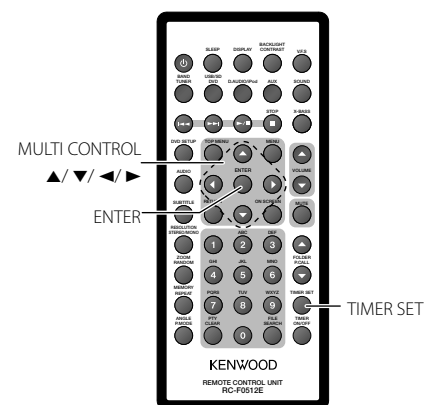
- 1 When you use HDMI connection, you can change the resolution (576p, 720p, 1080i, 1080p) for the HDMI output. The HDMI will be outputted at 576p resolution, even if you set the resolution to 576i on the HDMI connection.

- When the no sound or noisy sound are outputted with HDMI connection, set the HDMI AUDIO in DVD SETUP menu to PCM.
- If there is noise or lines on the screen, please check the HDMI cable.
- Not all HDCP-compatible DVI devices will work with this unit.
- If your HDMI TV does not support HDCP, the blue screen appears on the screen.
- If the abnormal picture appears on the TV screen, turn off the unit and then turn the unit on again.

Setup

Clock setting

The time of the day of the system can be set.



- 1 Press **TIMER SET** button.
- 2 Press **MULTI CONTROL** ◀ or ▶ button to select "CLOCK" and press **ENTER** button. "CLOCK SETTING" appears on the display.
- 3 Press **ENTER** button. The hour indication will start flashing.
- 4 Press **MULTI CONTROL** ▲ or ▼ button to set the hours and press **ENTER** button. The minute indication starts flashing.
- 5 Press **MULTI CONTROL** ▲ or ▼ button to set the minutes and press **ENTER** button. When the setting completes, "COMPLETE" is displayed and the unit exits the setup mode automatically.

- The clock setting will be erased when the power cord is disconnected or a power failure occurred.
- The **MULTI CONTROL** ◀ or ▶ button can be used to move across the setting items.

Operation

1 Turn the system on.

Press **⏻** button.

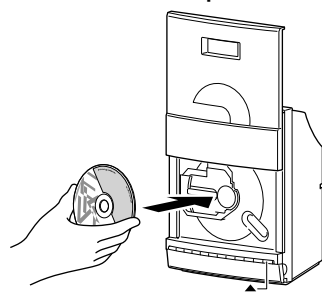
Turn the system ON (OFF). Pressing **⏻** button while the system is ON switches it OFF (standby mode).

2 Press the selector button once or more to select of the desired audio source.

- **TUNER BAND** button: FM → AM
- **DVD/USB/SD** button: DVD → USB → SD
- **D.AUDIO/iPod** button: D.AUDIO → iPod
- **AUX** button: AUX

DVD

1 Press ▲ button to open the DVD door.

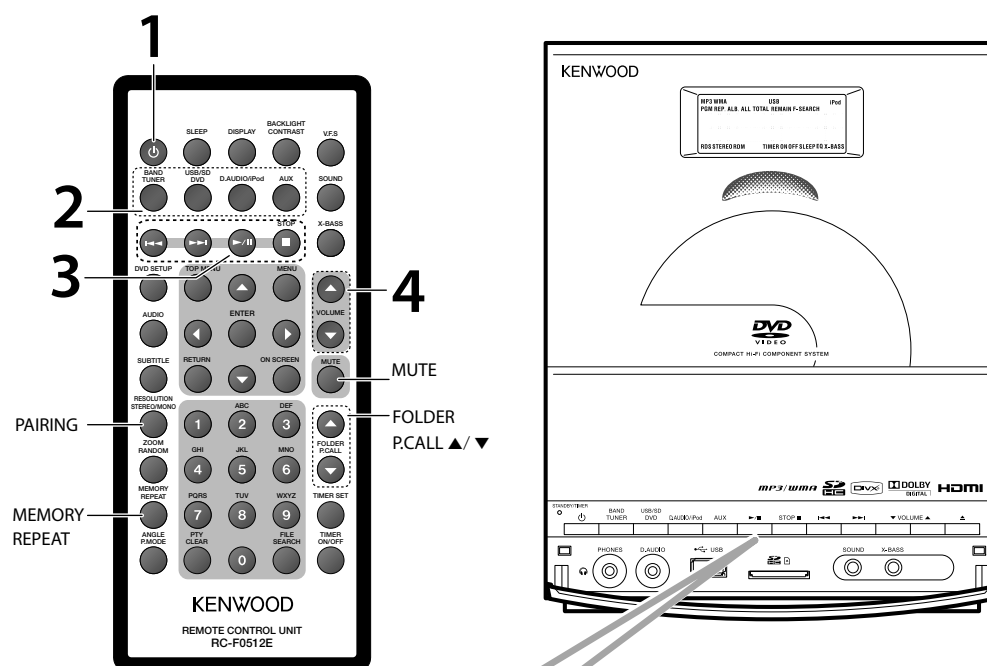


2 Insert a disc into the disc loader with the label side is facing up.

- #### 3 Press ▲ button to close the DVD door.
- For a DVD, playback starts automatically.
 - For a CD, the total playtime and total number of tracks will appear in the display.
 - For an audio file-CD, the total album number and total file number will appear on the display.

AUX (external component)

An external component can be connected to AUX IN of this unit and played back.

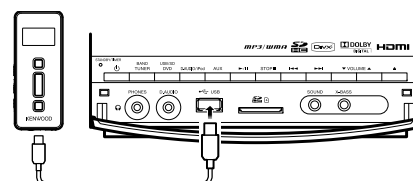


Headphones

To listen to your stereo with headphones (separately available), use the 3.5 mm phones jack on the main unit. Connecting headphones mutes the sound from the speakers.

USB device

Insert a USB device to the USB connector on the front panel.



"USB" is displayed. The total album number and total file number will appear on the display.

SD card

Insert the SD card into the SD card slot until it clicks.



The total album number and total file number will appear on the display.

RADIO

Auto preset radio station

Radio stations can be preset automatically in preset channels.

- 1 Press **TUNER BAND** button to select the desired waveband: FM or AM.
- 2 Press **MEMORY/REPEAT** button for more than 2 seconds.

The receivable radio stations are preset automatically. When the Auto preset operation has completed, the unit enters the condition in which preset station P01 is tuned.

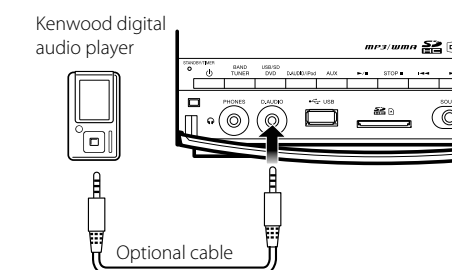
Tuning to a preset radio station

Press **FOLDER/P.CALL** ▲ or ▼ button.

D.AUDIO

Playback of Digital Audio Player

Kenwood digital audio player can be connected to play audio files in it.



- 1 Connect an the player.
- 2 Turn the connected player ON and start playing it.

iPod

Connect an iPod to the iPod dock.

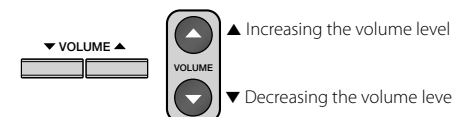
3 Start playback.

Press **▶||** button.

To stop playback of DVD/USB device/SD card/D.AUDIO... Press **STOP** ■ button.

To select a track/ file/ song... Press **◀** or **▶** button.

4 Adjust using VOLUME.



Muting the sound temporarily... Press **MUTE** button.

To cancel muting... Press **MUTE** button again (this resumes the original volume) or adjust the volume.

Removing a disc

- 1 Press ▲ button and carefully pull it out.
- 2 Press ▲ button to close the DVD door.

Removing the USB device/SD card/D.AUDIO/iPod

- 1 Press the **⏻** button to select standby mode.
- 2 Remove the USB device/SD card/D.AUDIO/iPod.

Standby mode

While the STANDBY/TIMER indicator is lit, a small amount of power is supplied to the system to back up the memory. This is called standby mode. Under the condition, the system can be turned ON by the remote control unit.