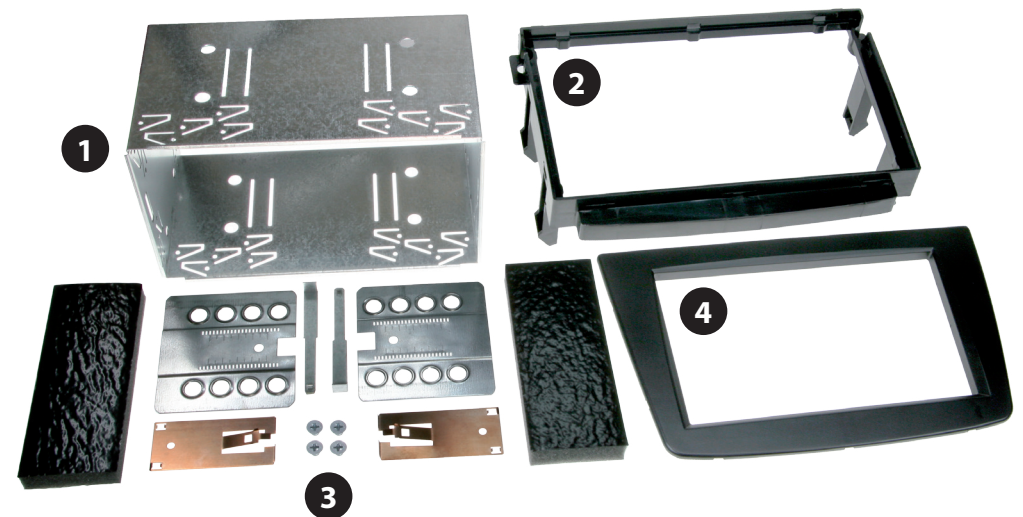


• Alfa MiTo 2008->

Compatible with these Kenwood double DIN devices

Kenwood Navigation



Double DIN Kit contents

- (1) Metal Frame
- (2) Mounting Frame
- Installation Kit (3)
- Facia Plate (4)

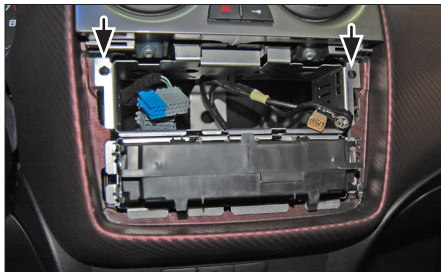
Installation Manual Double DIN Kit CAW 2001-08-RT



1. Insert special radio release keys in the holes of the OEM Radio



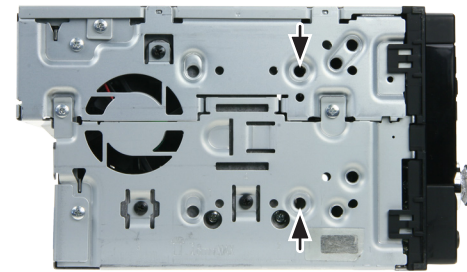
2. Remove the OEM Radio



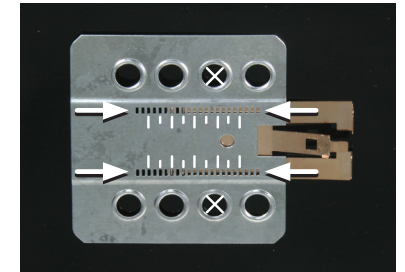
3. Remove the original metal holder inside the the dashboard, which is fixed by 2 screws (see arrows)



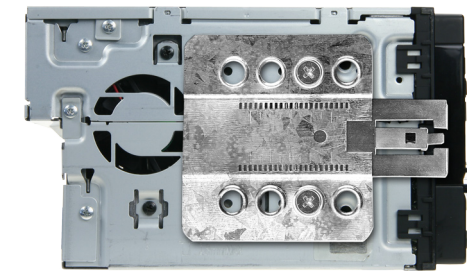
4. Push the new mounting bracket into the dashboard and fix it with the 2 original screws.



Mount the metal brackets with the double DIN head unit



The position of the copper coloured holder can be adjusted to your needs for perfect fit. (see sample)



5. Push the Metal Frame into the facia plate, place both into the dashboard.



Connect all required circuit points and push the double DIN head unit in the metal frame until it snaps in.

Place the Facia Plate. Reinstall everything in reverse order to finish installation.

All installation work must be performed by a qualified professional installer only. The manufacturer / dealer is not liable for any kind of incidental or indirect damages.