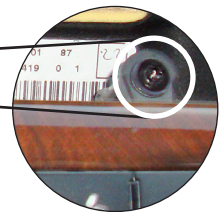
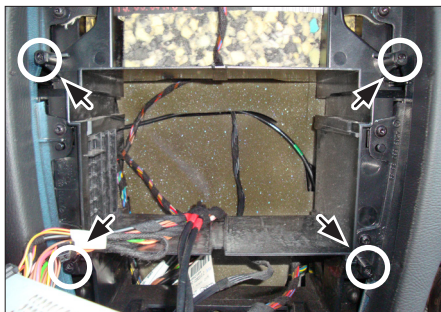
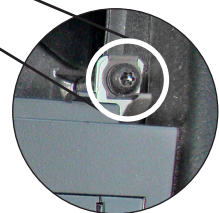




8. Remove the two Torx screws, located over the switch panel. Remove the switch panel.



9. Remove the two Torx screws, located over the OEM head unit.



10. Remove OEM head unit.

11. Place the fascia plate and fix it with the 4 original screws.

Push the metal frame into the fascia plate.

Connect all required circuit points and push the double DIN head unit until it snaps in.

Place the trim frame.

Reinstall everything in reverse order to finish installation.



KENWOOD

Installation Manual Double DIN Kit

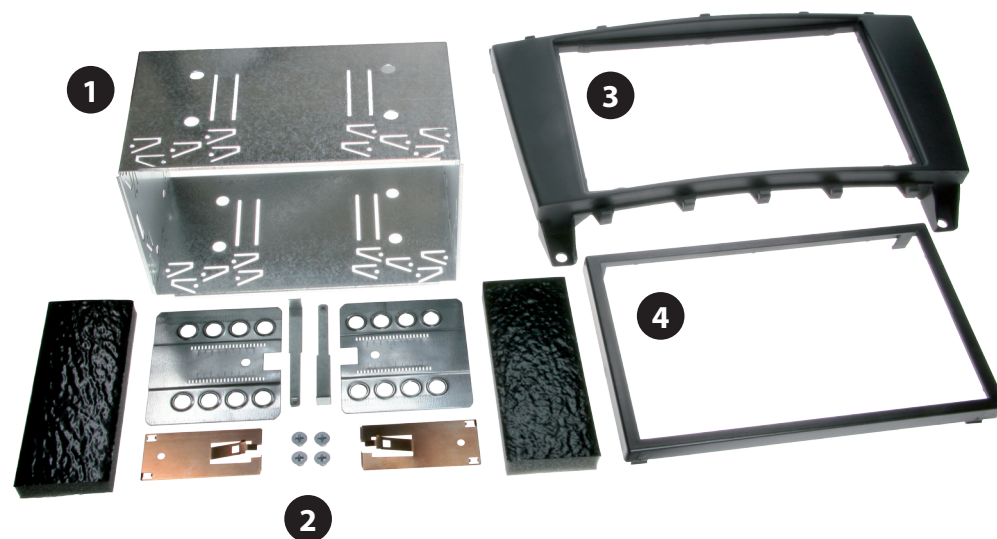
Standard: CAW 2190-16

Rubber-Touch: CAW 2190-16-RT

• Mercedes C-Class (W203) 2004 →

Compatible with these Kenwood double DIN devices

Kenwood Navigation



Double DIN Set contents

- (1) Metal Frame
- (2) Installation Kit
- (3) Facia Plate
- (4) Trim Frame



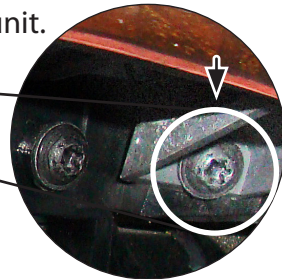
1. Mercedes C-Class with OEM head unit.



2. Remove panel by lifting it up. Remove ash tray.



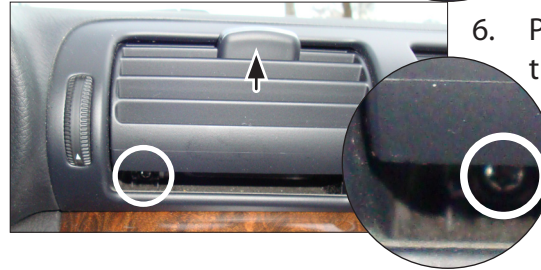
3. Remove the two Torx (TX20) screws underneath the air condition control unit.



4. Pull out the air condition control unit. Remove the two Torx (TX20) screws under the OEM-Radio.



5. Unclip the air vent unit carefully on both sides with a screw driver.

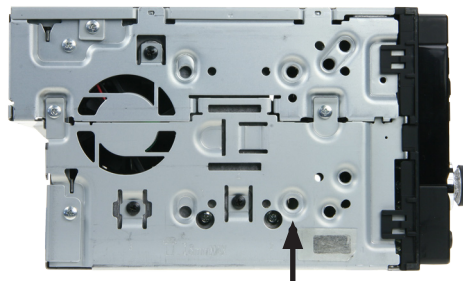


6. Pull up the air vent and remove the 2 screws (left and right) which become visible.

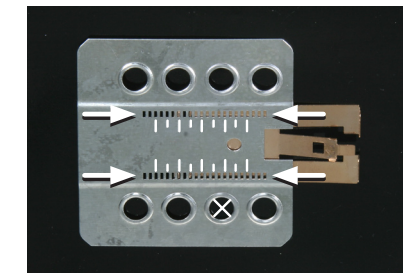


7. Pull down the air vent and unclip the whole unit at both sides carefully with a screw driver.

Remove the air vent unit.



Mount the metal brackets with the double DIN head unit



The position of the copper coloured holder can be adjusted to your needs for perfect fit. (see sample)

All installation work must be performed by a qualified professional installer only. The manufacturer / dealer is not liable for any kind of incidental or indirect damages.